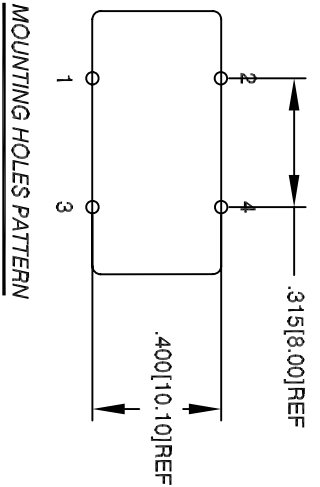
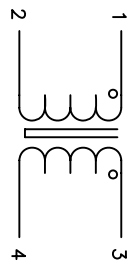
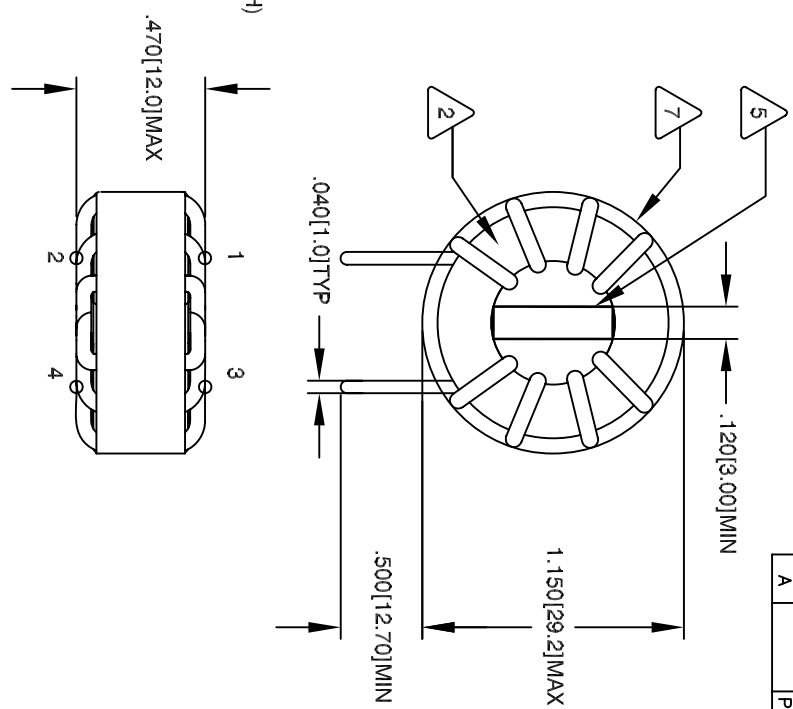


The information contained in this drawing is the sole property of CMS Coil Winding Specialist. Any reproduction in part or whole without written permission of CMS Coil Winding Specialist is prohibited.

| REVISION HISTORY | | SIGN & DATE | |
|---------------------|-----|-------------|---------|
| REV | ECN | BY | DATE |
| A | | GN | 8/20/10 |
| PRELIMINARY RELEASE | | CHK | AK |
| | | DATE | 8/20/10 |

- 8 BUILD TO ROHS COMPLIANCE AND IS LEAD FREE
- 7 WHERE SHOWN, USING A PERMANENT MARKING METHOD MARK PART NUMBER AND REVISION WRAP INDUCTOR WITH MYLAR 3M #69 OR EQUAL (0.25" WIDTH)



- 6 TO THE CORE MUST REST FLAT ON PCB. LEADS MUST BE TANGENT FLUSH WITH THE CORE EDGE, AS SHOWN (I.E. COIL REMOVE INSULATION AND TIN LEADS APPROX. 0.5 INCH)
- 5 SPACER : UL 94-V0, FR-4 OR EQUAL MIN 3.00 MM THICK
- 4 WIND BOTH COILS EVENLY SPACED
- 3 CONSTRUCTION:
WEIGHT: 24.0 GRAM
INTER-WINDING CAPACITANCE = 55 pF TYP
LEAKAGE INDUCTANCE = 30 uH MIN
CURRENT RATING = 9 AMPS
DCR ON EACH WINDING = 16 MILLI-OHMS MAX
L = 2.3 mH MIN, 10 KHz, 250 mV
SPECIFICATIONS:
- 2 WIRE: UL RECOGNIZED CLASS 155 °C OR HIGHER RATED MAGNET WIRE
CWS BYTE MARK OR OTHER APPROVED PART
CORE: COATED FERRITE TOROID, HIGH PERM MINZN
RATING CLASS B (130 °C MIN.) REQUIRED
MATERIAL: UL RECOGNIZED 94V-0 FOR FLAMMABILITY

NOTES: UNLESS OTHERWISE SPECIFIED, COMMON MODE CHOKE

| CODE IDENT | MFG. P/N | DESCRIPTION | ITEM NO. |
|---|-------------|-------------|----------|
| PARTS LIST | | | |
| Coil Winding Specialist, Inc. www.coilws.com 353 W Grove Ave Orange, CA 92865 | | | |
| TITLE: Common Mode Choke | | | |
| 3.3 mH, 9 Amp, Vertical Mount | | | |
| SIZE | DWG. NO. | REV | |
| B | CM-332U-9AV | A | |
| SCALE | NA | SHEET | 1 OF 1 |

UNLESS OTHERWISE SPECIFIED

DIMENSIONING AND TOLERANCE PER ANSI Y14.5M AND [UNITS IN INCHES]

TOLERANCE INCHES:
XXX=±.005 XX=±.015 X=±.030

TOLERANCE METRICS:
XXX=±.127 XX=±.38 X=±.95

ANGLE PROJECTION

DO NOT SCALE DRAWING