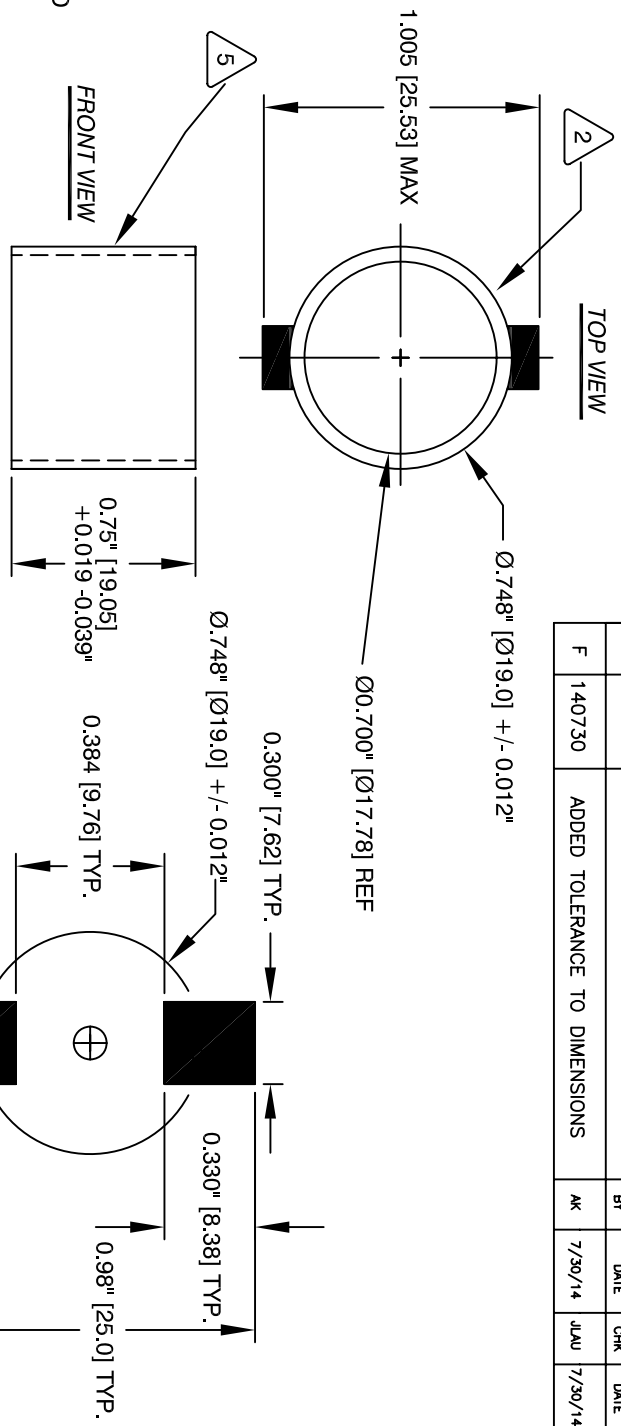
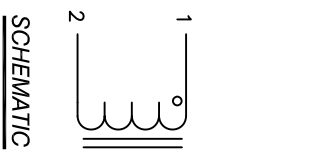


The information contained in this drawing is the sole property of CWS Coil Winding Specialist. Any reproduction in part or whole without written permission of CWS Coil Winding Specialist is prohibited.

REVISION HISTORY			
REV	ECN	DESCRIPTION	SIGN & DATE
BY	DATE	CHK	DATE
F	140730	ADDED TOLERANCE TO DIMENSIONS	AK 7/30/14 JLAU 7/30/14



6 BUILT TO RoHS COMPLIANCE

WHERE SHOWN, USING A PERMANENT MARKING METHOD

5 IF APPROPRIATE, MARK PART NUMBER AND REVISION

4 WIND 10 TURNS, EVENLY SPACED

CONSTRUCTION:

HI-POT TEST FOR CORE TO WINDING = 250VDC

DCR = 5.0 MILLI-OHMS MAX

L = 10.0 UH ±20% @ 100 KHz, 250 mV

3 SPECIFICATIONS @ 25°C

WIRE: UL RECOGNIZED 155°C RATED MAGNET WIRE, AWG # 27X12

CWS BYTEMARK OR OTHER APPROVED PART

2 CORE: COATED MPP CORE

1 MATERIAL: UL RECOGNIZED 94V-0 FOR FLAMMABILITY

NOTES: UNLESS OTHERWISE SPECIFIED, READ FROM BOTTOM UP.

UNLESS OTHERWISE SPECIFIED	
DIMENSIONING AND TOLERANCE PER ANSI Y14.5M	
ALL DIMENSIONS ARE IN INCHES AND [MILLIMETERS].	
TOLERANCE INCHES: XXX=±.010 XX=±.020 TOLERANCE METRICS: XXX=±.254 XX=±.51	±.0005 ±.0005 ±.0005 ±.0005
ANGLE PROJECTION	AS SHOWN
DO NOT SCALE DRAWING	

QTY	CODE	IDENT	MFG. P/N	DESCRIPTION	ITEM NO.
				PARTS LIST	
	AUTOCAD	X			
	SOLIDWORKS				
	SIGN	DATE			
	DRAWN	TDK	2/17/06		
	CHECKED	JLAU	2/17/06		
	ENGR.	KSUM	2/17/06		
	APPR.	JLAU	2/17/06		
	SCALE	N/A			
	SIZE	DWG. NO.			
	B	CWS-13560-100M-D			REV F
					SHEET 1 OF 1

High Current Output Choke

COLIWS COM, INC
www.coliws.com
353 W GROVE AVE
ORANGE, CA 92865

CWS Coil Winding Specialist.