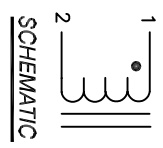


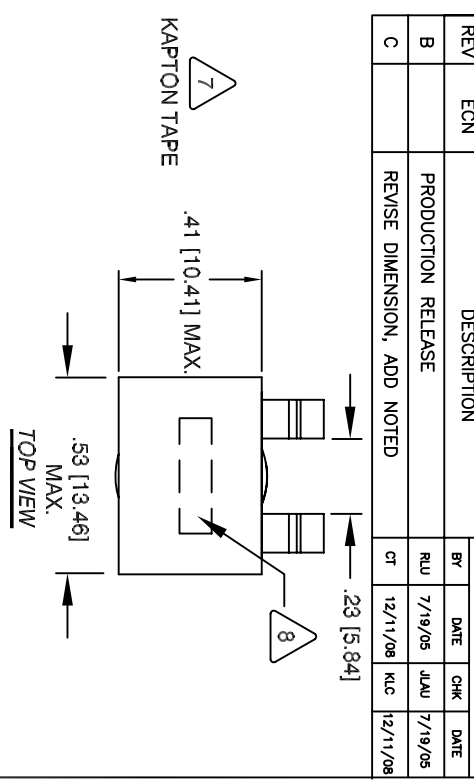
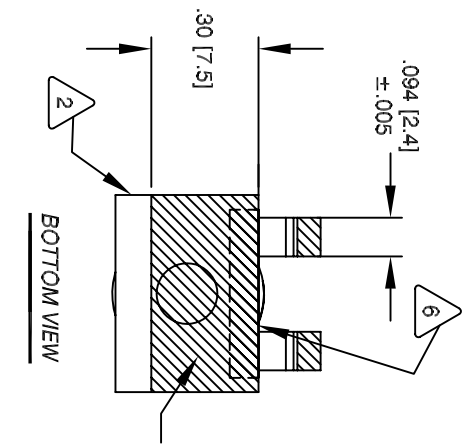
The information contained in this drawing is the sole property of CWS Coil Winding Specialist. Any reproduction in part or whole without written permission of CWS Coil Winding Specialist is prohibited.

REVISION HISTORY

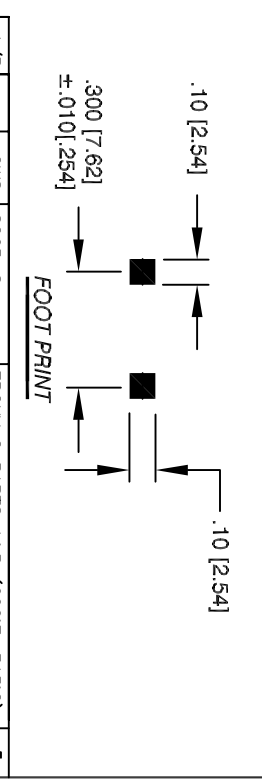
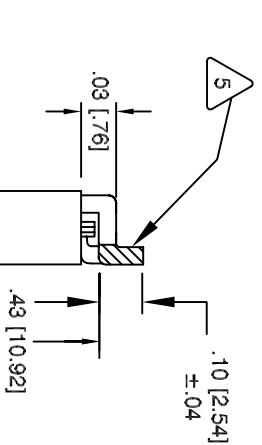
| REV | ECN | DESCRIPTION                 | BY  | DATE     | CHK  | DATE     |
|-----|-----|-----------------------------|-----|----------|------|----------|
| B   |     | PRODUCTION RELEASE          | RUU | 7/19/05  | JLJU | 7/19/05  |
| C   |     | REVISE DIMENSION, ADD NOTED | CT  | 12/11/08 | KLC  | 12/11/08 |



- 10 PACKAGE: TAPE & REEL 500 pcs PER REEL
- 9 BUILT TO ROHS COMPLIANCE AND LEAD FREE
- 8 WHERE SHOWN, USING A PERMANENT MARKING METHOD MARK PART NUMBER AND REVISION IN (BLACK) APPROX



- 7 BOTTOM CORE AS SHOWN APPLY ONE KAPTON TAPE TO COVER THE EDGES OF
- 6 FILL WINDING AND CORE WITH EPOXY 2 PART A&B (600°F, 315°C)
- 5 THE LEAD MUST REST FLAT ON PCB. REMOVE INSULATION AND TIN LEADS APPROX. 0.10 INCH



- 4 HELIX WIND 3-3/4 TURNS TIGHT TO CORE AND EVENLY SPACED CONSTRUCTION:
- HI-POT (2 SECOND, 5mA MAX.) 300 VRMS WINDING TO CORE  
DCR = 1.8 MILLI-OHMS MAX. @ 25°C  
L @ 0.5A DC = 1.24 UH  
L = 1.4 UH ± 15%, 0.25V, 0.5 A, 100KHz. @ 125°C  
SPECIFICATIONS @ 25°C
- 3 EPOXY: 2 PARTS A & B (600°F, 315°C)  
WIRE: UL RECOGNIZED 200°C RATED MAGNET WIRE, JIS C3102  
CWS BYTEMARK OR OTHER APPROVED PART  
CORE: HIGH FLUX
- 2 HELICAL COIL RATING 200°C REQUIRED  
MATERIAL: UL RECOGNIZED 94V-0 FOR FLAMMABILITY
- 1 NOTES: UNLESS OTHERWISE SPECIFIED. READ FROM BOTTOM UP

| A/R | QTY  | UM  | CODE        | IDENT | MFG. P/N | DESCRIPTION                       | ITEM NO. |
|-----|------|-----|-------------|-------|----------|-----------------------------------|----------|
| 1   | .42" | CWS | 8265-S      |       |          | EPOXY 2 PARTS A&B (600°F, 315°C)  | 5        |
| 1   | 2".0 | CWS | KAPTON TAPE |       |          | KAPTON TAPE, 0.25 Wk .42          | 4        |
| 1   | EA   | CWS | ET26174     |       |          | BLK, KAPTON TAPE, 0.375" W x 2.0" | 3        |
| 2   | EA   | CWS | 395275      |       |          | 2.4x .52mm RIBBON WIRE            | 2        |
|     |      |     |             |       |          | HIGH FLUX CORE                    | 1        |

**PARTS LIST**

|            |      |         |                         |                              |
|------------|------|---------|-------------------------|------------------------------|
| AUTOCAD    | SIGN | DATE    | TITLE:                  | CWS Coil Winding Specialist. |
| SOLIDWORKS | RUU  | 7/19/05 | 40 Amps Output Choke    | 353 W. GROVE AVE             |
| DRWING     | JLJU | 7/19/05 | (2.4mmx 0.52 mm 3-3/4T) | ORANGE, CA 92865             |
| CHKD       | KSUM | 7/19/05 | SIZE                    | DWG. NO.                     |
| ENGR.      | JLJU | 7/19/05 | B                       | CWS-5323B                    |
| APPR.      | JLJU | 7/19/05 | SCALE                   | 4=1                          |
|            |      |         |                         | SHEET 1 OF 1                 |