

The information contained in this drawing is the sole property of CWS Coil Winding Specialist. Any reproduction in part or whole without written permission of CWS Coil Winding Specialist is prohibited.

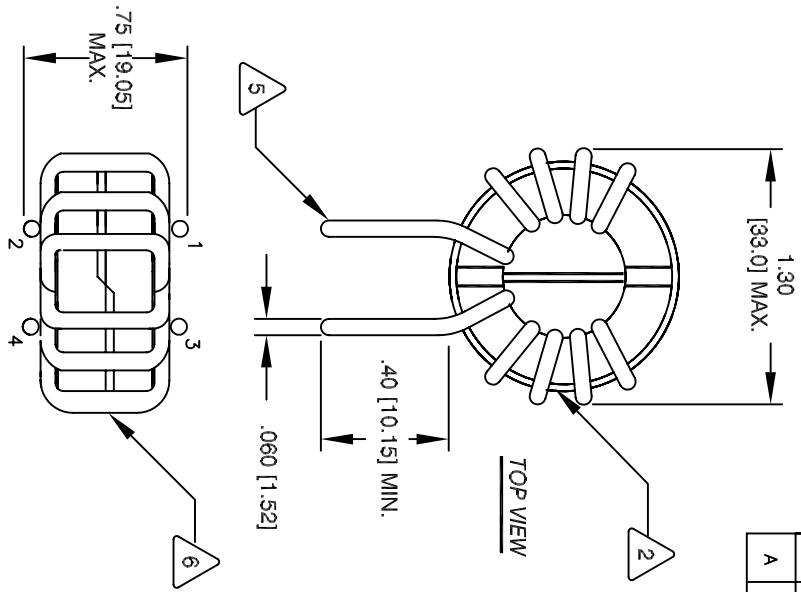
REVISION HISTORY

REV	ECN	DESCRIPTION	BY	DATE	CHK	DATE
A		PRODUCTION RELEASE	CT	12/9/08	KLC	12/9/08

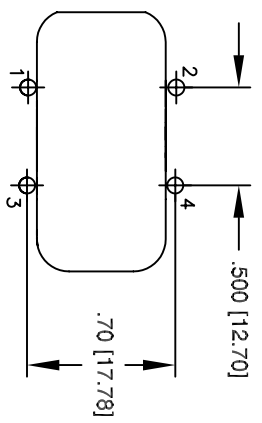
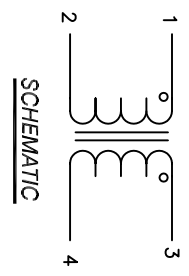
- 7 BUILT TO ROHS COMPLIANCE AND LEAD FREE
- 6 WHERE SHOWN, USING A PERMANENT MARKING METHOD MARK PART NUMBER AND REVISION IN APPROX
- 5 FLUSH WITH THE COIL EDGE, AS SHOWN REMOVE INSULATION AND TIN LEADS APPROX. 0.4 INCH

- 4 WIND ON EACH SIDE TO CORE AND EVENLY SPACED CONSTRUCTION:
 TEMP RANGE = -25 °C TO 120°C
 MAX TEMP RISE = 29 °C
 TEST VOLTAGE = 2000 VAC, 1 MIN.
 TOTAL DCR OF BOTH WINDINGS = 6.0 MILLI-OHMS COMBINED.
 RATED VOLTAGE = 250 VAC OR VDC
 RATED CURRENT = 12 AMPS
 L = 0.2 mH MIN., 10 KHz, 0.250 Vrms, 0 ADC
 INSULATION RESISTANCE = 100 MEGA-OHMS MIN. @ 500 VDC
 SPECIFICATIONS AT 25°C:

- 3 APPROVED PART
 WIRE: UL RECOGNIZED 200°C RATED MAGNET WIRE
 CWS BYTEMARK OR OTHER APPROVED PART
 CORE: FERRITE TOROID, HIGH PERM MNZN
 - 2 BOBBIN RATING CLASS B (200°) REQUIRED MATERIAL: UL RECOGNIZED 94V-0 FOR FLAMMABILITY
- NOTES: UNLESS OTHERWISE SPECIFIED.



BOTTOM VIEW



MOUNTING HOLES PATTERN

QTY	CODE IDENT	MFG. P/N	DESCRIPTION	ITEM NO.
			PARTS LIST	
	AUTOCAD SOLIDWORKS			
	SIGN	DATE		
	CT	12/9/08		
	KLC	12/9/08		
	KLC	12/9/08		
	KLC	12/9/08		
	APPR.	12/9/08		
	KLC	12/9/08		
TITLE:		Common Mode Choke Vertical Mount		
SIZE		HL-V-201U-12A		
SCALE		2=1		
DRAWN		CWS Coil Winding Specialist		
ENGR.		353 W. GROVE AVENUE		
APPR.		ORANGE, CA 92865		
SIGN & DATE		DATE		
BY		12/9/08		
CHK		KLC		
DATE		12/9/08		