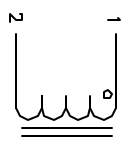


The information contained in this drawing is the sole property of CWS Coil Winding Specialist. Any reproduction in part or whole without written permission of CWS Coil Winding Specialist is prohibited.

REVISION HISTORY

REV	ECN	DESCRIPTION	DATE	BY	CHK	DATE
A		PRODUCTION RELEASE	3/01/05	TKK	JLU	3/01/05



SCHEMATIC

6 WHERE SHOWN, USING A PERMANENT MARKING METHOD
 MARK PART NUMBER AND REVISION IN APPROX

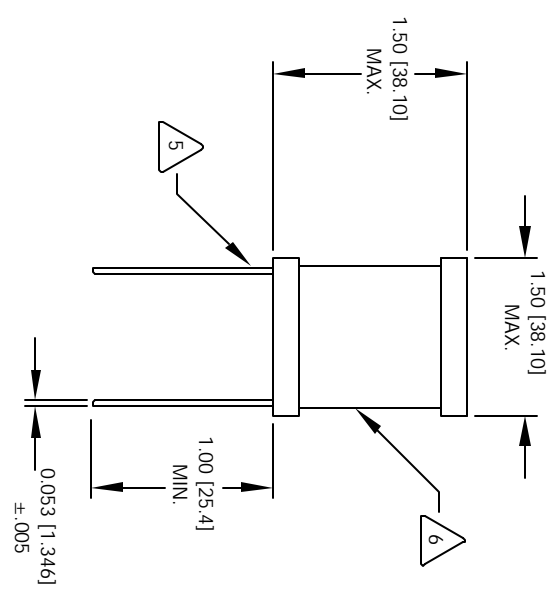
5 FLUSH WITH THE COIL EDGE, AS SHOWN
 LEAD TINNED TO WITHIN 1/8" OF BODY
 REMOVE INSULATION AND

4 FIX LEADS SPACING PER DRAWING
 USE VW-1 RATED SHRINK TUBING TO COVER WINDING
 WIND RATED WIRE TO ROD CORE AND EVENLY SPACED
 CONSTRUCTION:

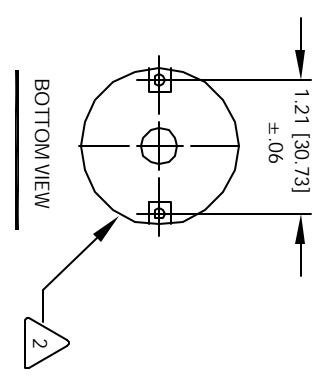
3 HI-POT CORE TO WIRE = 750 VDC
 MAX TEMP RISE AT RATED CURRENT = 35°C
 DCR = 464.0 MILLI-OHMS MAX
 MAX L DROP A RATED CURRENT = 5%
 RATED CURRENT (DC) = 2.8 AMPS.
 L = 2500.0 uH ±10% @ 1KHz, 0.25 mV, 0 ADC
 SPECIFICATIONS @ 25°C

2 WIRE: UL RECOGNIZED 130° RATTING MAGNET WIRE
 CWS BYTEMARK OR OTHER APPROVED PART
 CORE: FERRITE BOBBIN CORE

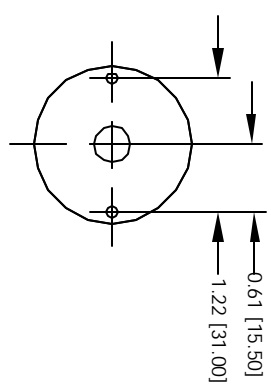
1 MATERIAL: UL RECOGNIZED 94V-0 FOR FLAMMABILITY
 NOTES: UNLESS OTHERWISE SPECIFIED, READ FROM BOTTOM UP.



FRONT VIEW



BOTTOM VIEW



MOUNTING HOLES PATTERN

CODE IDENT	MFG. P/N	DESCRIPTION	ITEM NO.
		PARTS LIST	
AUTOCAD SIGN	X	CWS Coil Winding Specialist	
SOLIDWORKS SIGN		1510 E. Edinger Ave	
		Unit B, Santa Ana, CA, 92705	
DATE	DATE	TITLE	
3/01/05	3/01/05	High Current RF Chokes	
DRWN TKK	CHKR KSUM	SIZE DIM. IN.	REV
3/01/05	3/01/05	B	A
APPR. JLU	3/01/05	SCALE	
		2=1	SHEET 1 OF 1