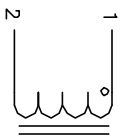


The information contained in this drawing is the sole property of CWS Coil Winding Specialist. Any reproduction in part or whole without written permission of CWS Coil Winding Specialist is prohibited.

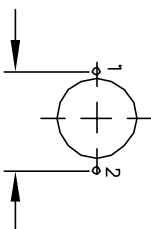
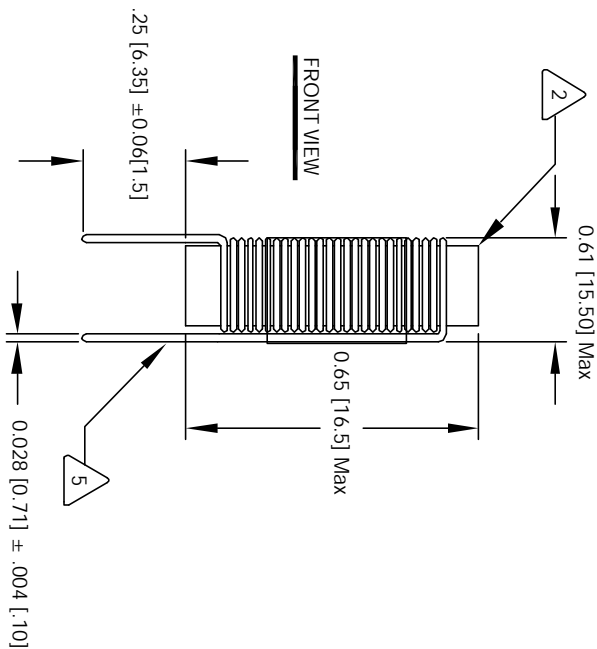
REVISION HISTORY

REV	ECN	DESCRIPTION	SIGN & DATE		
			BY	DATE	DATE
C		PRODUCTION RELEASE	TDK	9/19/05	9/19/05



SCHEMATIC

- 1 INDUCTANCE DROPS 10% FROM ZERO ADC VALUE SATURATION CURRENT IS THE CURRENT AT WHICH THE TEMP. RISE ABOVE AMBIENT OF 25 °C.
- 2 MAX DC CURRENT IS AVERAGE CURRENT FOR 40 °C NOTES:  
EPOXY LEADS TO CORE  
.05" ABOVE THE CORE EDGE, AND  
REMOVE INSULATION AND TIN LEADS
- 3 WIND COILS EVENLY SPACED
- 4 CONSTRUCTION:  
MAX TEMP RISE AT MAX CURRENT = 40 °C  
HI-POT TEST FOR CORE TO WINDING = 500 VDC  
DCR = 110 MILLI-OHMS MAX @ 25 °C  
SATURATION CURRENT = 3 AMPS  
L = 82 uH ± 10%, 15.75 KHZ, 0.1 Vrms, 0 ADC;  
SPECIFICATIONS: MAX RMS (DC) CURRENT = 3 AMPS
- 5 WIRE: UL RECOGNIZED 130°C RATED MAGNET WIRE  
CWS BYTEMARK OR OTHER APPROVED PART  
CORE: MANGANESE ZINC FERRITE ROD



MOUNTING HOLES PATTERN

VERTICAL MOUNT

- 1 RATING CLASS B (130°C) REQUIRED  
MATERIAL: WIRE INSULATION - UL RECOGNIZED 94V-0 FOR FLAMMABILITY
- 2 NOTES: UNLESS OTHERWISE SPECIFIED, POWER INDUCTOR, DIMENSIONS IN INCHES [MM], READ FROM BOTTOM UP

UNLESS OTHERWISE SPECIFIED	DIMENSIONING AND TOLERANCE PER ANSI Y14.4M
ALL DIMENSIONS ARE IN INCHES AND [MILLIMETERS]	
TOLERANCE INCHES: .XX ± .03, .X ± .015, .X ± .01	ANGLE PROJECTION
TOLERANCE METRCS: .XX ± .127, .X ± .254	DO NOT SCALE DRAWINGS

CODE IDENT	MFG. P/N	DESCRIPTION	ITEM NO.
AUTOCAD SIGN	X		
SOLIDWORKS SIGN			
DATE	DATE	PARTS LIST	
9/19/05	9/19/05	CWS Coil Winding Specialist.	
9/19/05	9/19/05	1510 E. Edinger Ave	
9/19/05	9/19/05	Unit B, Santa Ana, CA, 92705	
ENGR. KSUM	9/19/05	TITLE: Power Chokes	
APPR. JLAU	9/19/05	Vertical Mount	
SIZE [Dwg. No.]	SCALE	REV	
B	2=1	PV-823-03	C
			REV
			C