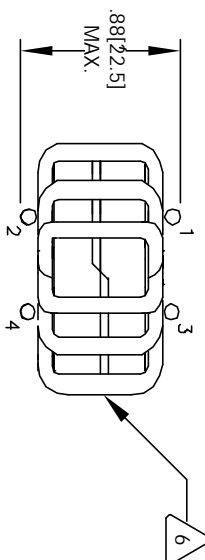
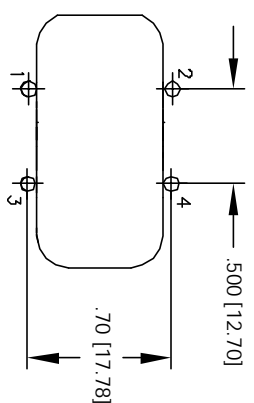
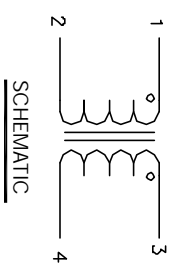
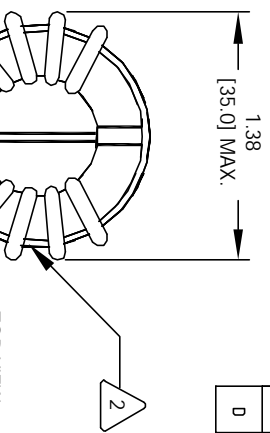


The information contained in this drawing is the sole property of CWS Coil Winding Specialists. Any reproduction in part or whole without written permission of CWS Coil Winding Specialists is prohibited.

REVISION HISTORY			
REV	ECN	DESCRIPTION	DATE
0		PRODUCTION RELEASE	5/31/06



- 7 BUILT TO ROHS COMPLIANCE AND LEAD FREE.
WHERE SHOWN
IF APPLICABLE, MARK PART NUMBER
- 6 FLUSH WITH THE COIL EDGE, AS SHOWN
REMOVE INSULATION AND TIN LEADS APPROX. 0.5 INCH
- 5 WIND ON EACH SIDE TO CORE AND EVENLY SPACED
CONSTRUCTION:
WEIGHT = 33.9 GRAMS
TEMP RANGE = -25 °C TO 120°C
MAX TEMP RISE = 40 °C
TEST VOLTAGE = 2000 VAC, 1 MIN.
TOTAL DCR OF BOTH WINDINGS = 3.0 MILLI-OHMS COMBINED.
RATED VOLTAGE = 250 VAC OR VDC
RATED CURRENT = 30 AMPS
L = 0.1 MH MIN., 50 Hz - 400 KHz, 0.250 Vrms, 0 ADC
INSULATION RESISTANCE = 100 MEGA-OHMS MIN. @ 500 VDC
SPECIFICATIONS AT 25°C:
- 3 APPROVED PART
WIRE: UL RECOGNIZED 200°C RATED MAGNET WIRE
CWS BYTEMARK OR OTHER APPROVED PART
CORE: FERRITE TOROID, HIGH PERM MNZN
- 2 BOBBIN RATING CLASS B (200°) REQUIRED
MATERIAL: UL RECOGNIZED 94V-0 FOR FLAMMABILITY

NOTES: UNLESS OTHERWISE SPECIFIED, READ FROM BOTTOM UP.

EP FORM0005 REV 3 10/01

UNLESS OTHERWISE SPECIFIED	
DIMENSIONING AND TOLERANCE PER ANSI Y14.5M	ALL DIMENSIONS ARE IN INCHES AND (DIMENSIONS)
TOLERANCE INCHES: .XXX = ±.005 .XX = ±.015 .XX = ±.127 .X = ±.25	ANGLE PROJECTION
DO NOT SCALE DRAWINGS	

QTY	CODE	MFG. P/N	DESCRIPTION	ITEM NO.
	IDENT			
	X			
PARTS LIST				
AUTOCAD		CWS Coil Winding Specialist.		
SOLIDWORKS		353 W. GROVE AVENUE		
SIGN		ORANGE, CA. 92865		
DATE		TITLE		
7/05/07	PPR	Common Mode Chokes		
7/05/07	JLJU	Vertical Mount		
7/05/07	ENGR.	SIZE Dwg. No.		
7/05/07	KSUM	HL-V-101U-30A		
7/05/07	APPR.	SCALE		
7/05/07	JLJU	2=1		
REV				D

CAD-FILE: