

The information contained in this drawing is the sole property of CWS Coil Winding Specialists. Any reproduction in part or whole without written permission of CWS Coil Winding Specialists is prohibited.

REVISION HISTORY

REV	ECN	DESCRIPTION	SIGN & DATE			
			BY	DATE	CHK	DATE
C		PRODUCTION RELEASE	RPB	5/29/07	JLJU	5/29/07

7 BUILT TO ROHS COMPLIANCE AND LEAD FREE.

WHERE SHOWN

IF APPLICABLE MARK PART NUMBER

FLUSH WITH THE COIL EDGE, AS SHOWN

REMOVE INSULATION AND TIN LEADS APPROX. 0.5 INCH

WIND ON EACH SIDE TO CORE AND EVENLY SPACED

4 CONSTRUCTION:

TEMP RANGE = -25 °C TO 120°C

MAX TEMP RISE = 40 °C

TEST VOLTAGE = 2000 VAC, 1 MIN.

TOTAL DCR OF BOTH WINDINGS = 63.6 MILLIOHMS COMBINED.

RATED VOLTAGE = 250 VAC OR VDC

RATED CURRENT = 5 AMPS

L = 1.5 mH MIN., 50 Hz - 400 KHz, 0.250 Vrms, 0 ADC

INSULATION RESISTANCE = 100 MEGA-OHMS MIN. @ 500 VDC

3 SPECIFICATIONS AT 25°C:

APPROVED PART

WIRE: UL RECOGNIZED 200°C RATED MAGNET WIRE

CWS BYTE-MARK OR OTHER APPROVED PART

CORE: FERRITE TOROID, HIGH PERM MNZN

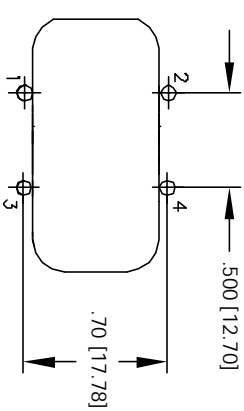
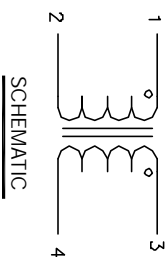
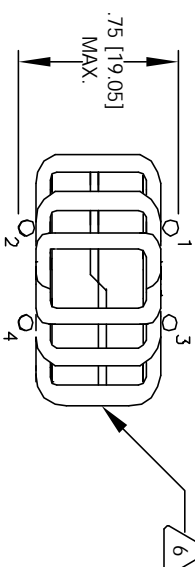
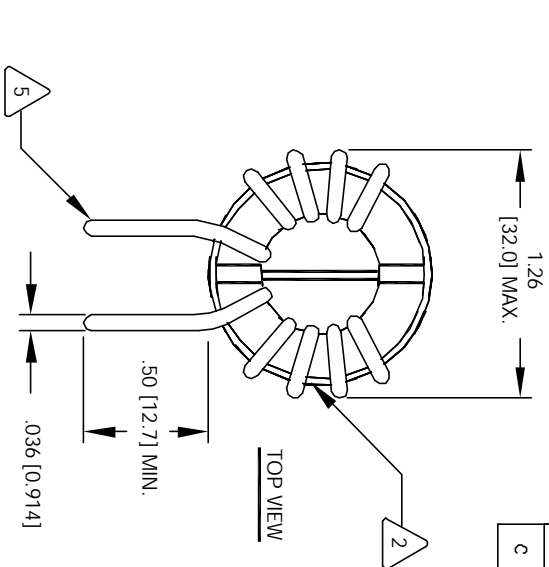
BOBBIN RATING CLASS B (200°) REQUIRED

1 MATERIAL: UL RECOGNIZED 94V-0 FOR FLAMMABILITY

NOTES: UNLESS OTHERWISE SPECIFIED,

READ FROM BOTTOM UP.

EP FORM0005 REV 3 10/01



UNLESS OTHERWISE SPECIFIED	DO NOT SCALE DRAWINGS
DIMENSIONING AND TOLERANCE PER ANSI Y14.5M	
ALL DIMENSIONS ARE IN INCHES AND (MILLIMETERS)	
TOLERANCE INCHES: .XXX ± .005 .XX ± .015	ANGLE PROJECTION
TOLERANCE METRICS: .XXX ± .127 .XX ± .254	

QTY	CODE	MFG. P/N	DESCRIPTION	ITEM NO.
	IDENT			
	X			
PARTS LIST				
AUTOCAD	SIGN	DATE	TITLE	
SOLIDWORKS	RPB	5/29/07	Common Mode Chokes	
DRWN	JLJU	5/29/07	Vertical Mount	
CHKD	KSUM	5/29/07	SIZE Dwg. No.	
ENGR.	JLJU	5/29/07	B	
APPR.	JLJU	5/29/07	HL-V-152U-5A	
SCALE			SHEET 1 OF 1	
2=1			REV C	

CWS Coil Winding Specialists.
353 W. GROVE AVENUE
ORANGE, CA. 92665

CAD-FILE: