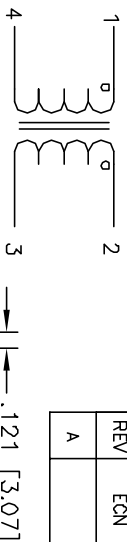


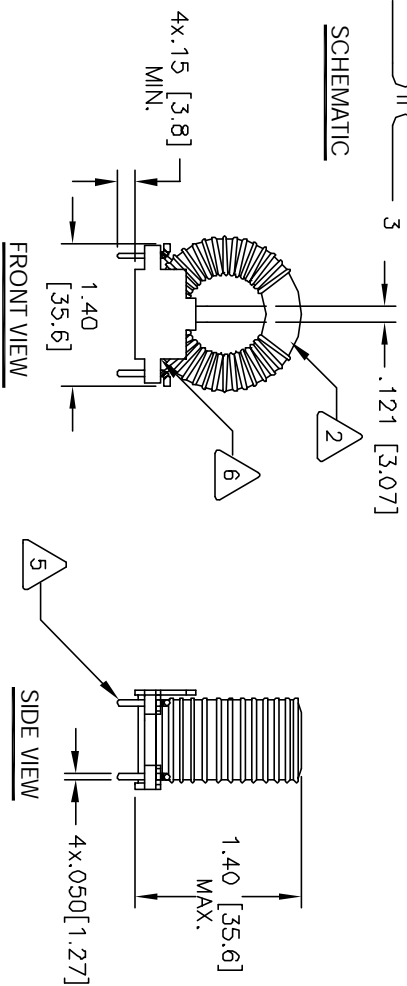
The information contained in this drawing is the sole property of CWS Coil Winding Specialists. Any reproduction in part or whole without written permission of CWS Coil Winding Specialists is prohibited.

REVISION HISTORY

REV	ECN	DESCRIPTION	BY	DATE	CHK	DATE
A		PRODUCTION RELEASE	JLU	7/10/07	JLU	7/10/07

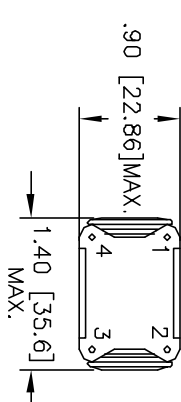


SCHMATIC

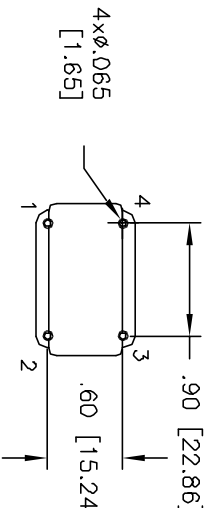


FRONT VIEW

SIDE VIEW



BOTTOM VIEW



MOUNTING HOLES PATTERN

7 BUILT TO ROHS COMPLIANCE AND LEAD FREE

WHERE SHOWN, USING A PERMANENT MARKING METHOD

MARK PART NUMBER AND REVISION

APPLY EPOXY 2 PARTS

REMOVE INSULATION AND SOLDER TO BOBBIN LEADS

WIND BOTH COILS EVENLY SPACED

CONSTRUCTION:

MAX. LEAKAGE INDUCTANCE = 37.84µH  
 TYPICAL SRF = 400 KHZ  
 HI-POT TEST FOR INTERWINDING ISOLATION = 1250VDC  
 MAX. TEMP RISE AT RATED CURRENT = 26°C  
 RATED CURRENT = 3.2 AMPS DC MAX  
 DCR TOTAL = 43.0 MILLI-OHMS MAX.  
 L=3.7 MH MIN. + 25% (100KHZ, <1Vrms)

SPECIFICATIONS @ 25°C

WIRE: UL RECOGNIZED 155°C OR 200°C RATED MAGNET WIRE  
 CWS BYTEMARK OR OTHER APPROVED PART  
 CORE: COATED FERRITE TOROID, HIGH PERM MNZN

RATING CLASS B (130°C) REQUIRED  
 MATERIAL: UL RECOGNIZED 94V-0 FLAMMABILITY FOR BOBBIN

NOTES: UNLESS OTHERWISE SPECIFIED. READ FROM BOTTOM UP.

CODE	IDENT	MFG. P/N	DESCRIPTION	ITEM NO.
AUTOCAD	X		PARTS LIST	
SOLIDWORKS				
SIGN	DATE			
DRAWN	RLU	7/10/07		
DESIGNED	JLU	7/10/07		
ENGR.	KSUM	7/10/07		
APPR.	JLU	7/10/07		
TITLE		SIZE	DATE	REV
Common Mode Line Chokes		B	PM-H-372U-3.2A	A
High Inductance Series		SCALE	1=1	SHEET 1 OF 1

UNLESS OTHERWISE SPECIFIED	DIMENSIONING AND TOLERANCE PER ANSI Y14.5M
ALL DIMENSIONS ARE IN INCHES AND (MILLIMETERS)	
TOLERANCE INCHES	±.005
TOLERANCE METRCS	±.127
ANGLE PROJECTION	1ST ANGLE
DO NOT SCALE DRAWING	