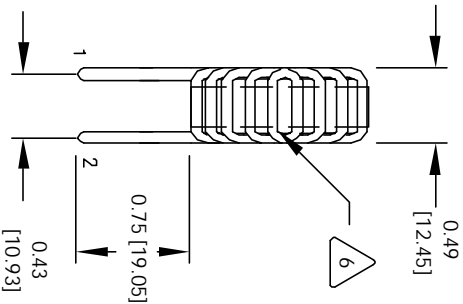


REVISION HISTORY						
REV	ECN	DESCRIPTION	SIGN & DATE			
			BY	DATE	CHK	DATE
C		PRODUCTION RELEASE	RFR	6/20/06	JLU	6/20/06



7 BUILT TO ROHS COMPLIANCE AND LEAD FREE.

WHERE SHOWN, USING A PERMANENT MARKING METHOD
IF APPLICABLE, MARK PART NUMBER AND REVISION

FLUSH WITH THE COIL EDGE, AS SHOWN

5 REMOVE INSULATION AND TIN LEADS APPROX. 0.75 INCH

4 WIND WIRE TO CORE EVENLY SPACED CONSTRUCTION:

WEIGHT = 26.4 GRAMS

HI-POT TEST FOR WIRE TO CORE = 500 VDC

INDUCTANCE @ RATED CURRENT = 225.0 uH

DC CURRENT RATING = 3.0 AMPS MAX

DCR = 118 MILLI-OHMS, MAX

INDUCTANCE @ 0 AMPS = 470.0 uH, $\pm 20\%$, 1 KHZ., 0.25 Vrms

3 SPECIFICATIONS @ 25 °C

WIRE: UL RECOGNIZED 130°C RATED MAGNET WIRE

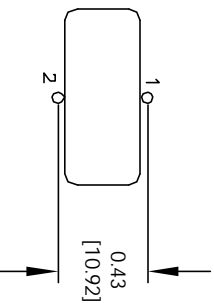
WIRE: 06 RECOGNIZED 130 C
CORE: COATED IRON POWDER

CORE COATING RATING CLASS B (130°) REQUIRED

1 MATERIAL: UL RECOGNIZED 94V-0 FOR FLAMMABILITY


NOTES: UNLESS OTHERWISE SPECIFIED, TOROIDAL INDUCTOR

READ FROM BOTTOM UP.



MOUNTING HOLES PATTERN

CODE		MFG. P/N	DESCRIPTION	ITEM NO.
IDENT				
PARTS LIST				
AUTOCAD	X	<div><div>COIL WS COIL, INC</div><div>353 W. GROVE AVENUE ORANGE, CA. 92665</div><div>CWS Coil Winding Specialist.</div></div>		
SOLIDWORKS				
SIGN	DATE			
TITLE:				
DRAWN RPR 6/20/06				
CHECKD JLAU 6/20/06	Power Toroidal Inductors Vertical Mount			
ENGR KSUM 6/20/06				
APPR JLAU 6/20/06				
SIZE DIM. MD.		REV		
B TC-471M-3A-90V		C		
SCALE		SHEET 1 OF 1		
2=1				

UNLESS OTHERWISE SPECIFIED
DIMENSIONING AND TOLERANCE PER ANSI Y14.4M
ALL DIMENSIONS ARE IN INCHES AND [UNLITERS]
TOLERANCE INCHES: .005-±.003 .XX-±.013
TOLERANCE METRICS: .005-±.127 .XX-±.030
ANGLE PROJECTION 
DO NOT SCALE DRAWING