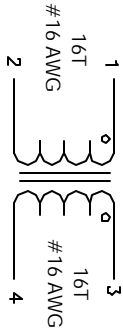
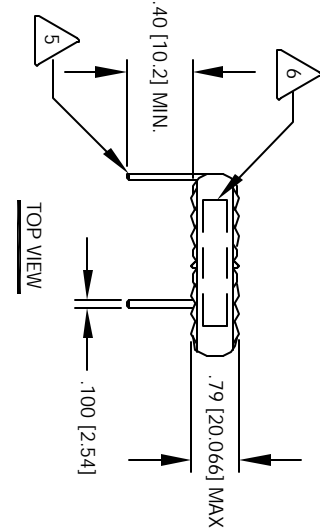


The information contained in this drawing is the sole property of CWS Coil Winding Specialist. Any reproduction in part or whole without written permission of CWS Coil Winding Specialist is prohibited.

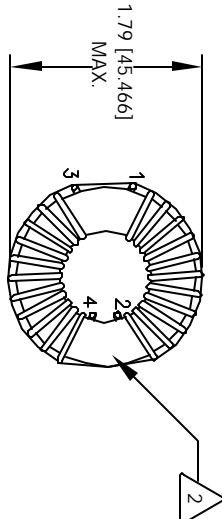
REVISION HISTORY				
REV	ECN	DESCRIPTION	SIGN & DATE	
A		PRODUCTION RELEASE	RF	1/05/05



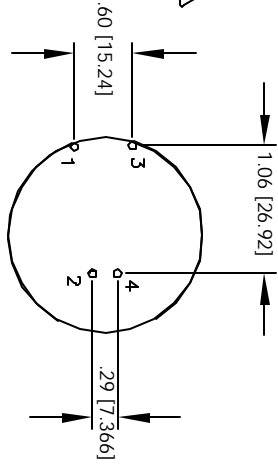
SCHEMATIC



TOP VIEW



BOTTOM VIEW



MOUNTING HOLES PATTERN

- 1 MATERIAL: UL RECOGNIZED 94V-0 FOR FLAMMABILITY
- 2 CORE: COATED FERRITE TOROID, VERY HIGH PERM MNZN
- 3 SPECIFICATIONS @ 25 °C :
WIRE: UL RECOGNIZED 200°C RATED MAGNET WIRE
CWS BYTEMARK OR OTHER APPROVED PART
EFFECTIVE FOR FILTERING NOISE IN 300 KHZ AND BELOW
DCR= 9 MILLI-OHMS MAX COMBINED (BOTH COILS)
L= 2.0 mH MIN / COIL; 2.6 mH NOM / COIL, 1 KHZ, 1 Vrms
- 4 CONSTRUCTION:
CORE, EVENLY SPACED AND NOTE POLARITY.
WIND 16 TURNS, AWG # 16. SINGLE LAYER ON EACH SIDE OF
TO INSURE INTERGRITY OF WINDING SEPARATION
HI-POT TEST FOR INTERWINDING ISOLATION = 250VDC
- 5 REMOVE INSULATION AND TIN LEADS APPROX. 0.40 INCH
FLUSH WITH THE COIL EDGE, AS SHOWN (I.E. COIL
MUST REST FLAT ON PCB). LEADS MUST BE TANGENT
WHERE SHOWN, USING A PERMANENT MARKING METHOD
MARK PART NUMBER AND REVISION
WRAP INDUCTOR WITH TAPE. (PER NOTE 2)

NOTES: UNLESS OTHERWISE SPECIFIED, READ FROM BOTTOM UP.

QTY	CODE	IDENT	MFG. P/N	DESCRIPTION	ITEM NO.
PARTS LIST					
AUTOCAD			X		
SOLIDWORKS			DATE		
SIGN			DATE		
UNLESS OTHERWISE SPECIFIED			DRAWN		
TOLERANCE PER ANSI Y14.5M			RFR		
ALL DIMENSIONS ARE IN INCHES			DRG		
AND [MULTIPLY]			JLW		
TOLERANCE INCHES			ENGR		
.XXX ± .010 .XX ± .020			KSUM		
TOLERANCE METERS			APPR		
.XXX ± .254 .XX ± .51			JLW		
ANGLE PROJECTION			1/05/05		
DO NOT SCALE DRAWING			SCALE		

TITLE:			CWS Coil Winding Specialist.		
Low Freq. Common Mode Inductor			1510 E. Edinger Ave.		
2.6 mH (Nom), 10 Amps			Unit B, Santa Ana, CA 92705		
SIZE			C-36A29-02		
B			REV A		
1 = 1			SHEET 1 OF 1		